

PUN- TAL DELS LLOPS ROUTE

OLOCAU, TOWN FOR TOURING

VEGETATION AND GEOLOGY

This route goes around Olocau, until reaching an archaeological site named "el Puntal dels Llops", an Iberian settlement from the 5th century B.C., situated in one of the meridional cliffs of the Calderona mountain range, 427 m above sea level. With other settlements, it is part of the defence and surveillance system of the Edeta (capital of the Edetans, an ethnic group of Iberians) territory and it is considered one of the best examples of Iberian watchtower.

In this route, we will enjoy several trees as the Aleppo pine (*Pinus halepensis*) and the cluster pine (*Pinus pinaster*), kermes oak (*Quercus coccifera*), terebinth (*Pistacea terebintus*), myrtle (*Myrtus communis*), Mediterranean buckthorn (*Rhamnus alaternus*) and more mediterranean flora.

GET TO OLOCAU

From Valencia you could take two routes: for the first one, take the Ademuz highway (CV-35) to Liria, taking the exit to Marines-Olocau (CV-25). After 8 km you will arrive to Olocau.

For the second one, take the Ademuz highway (CV-35), then take the exit to Bétera (CV-336); once in Bétera, passing through it towards Náquera (CV-310), leave Bétera and cross the ravine of Carraixet, turning left and taking the exit to Olocau (CV-336), Olocau is 17 km away from this point.

PUN- TAL DELS LLOPS ROUTE



ETHNOLOGY AND HERITAGE

The route starts at the *Casa de la Senyoria*, an antique manor that belonged to the Count and Countess of Olocau, built in the 18th century, and together with the Islamic tower built in the 13th century, the *Torre de Pardines*, they form what is known as "El Castell". Here you can find the Tourism Office and the Museum Collection of the *Puntal dels Llops*, (an Iberian fortress with a watchtower dated in the 5th century BC.), with archaeological material from that settlement.

We will leave the town by the *Vell* bridge, walking near the Town Hall, until we reach the first roundabout, where we will follow a marked detour that leads us through an orchard path until the local cemetery.

The way up is all perfectly signposted, and we will see a typical Mediterranean landscape.

For enter the inhabited space we will walk through a right-angled hall, advancing for a narrow pass between the tower and the cliff. Once inside, this town is defined by a unique main street, which crosses the settlement from north to south, allowing the access to their 17 rooms.

To come back, we will follow the same path but direction Olocau, and in the pond of *l'Amara*, we will take the left path.

Olocau City Council has a free guided tour service to Puntal dels Llops. For information and reservation, you can call the Olocau Tourism Office (672 79 44 04) or send an e-mail to puntal.llops@olocau.es

LAYOUT OF THE ARRIVAL TO OLOCAU



- Type: By foot.
- Length: 5.80 Km.
- Hardness: Low.
- Slope: 140 m.
- Duration: 1-2 h.

SPECIFICATIONS



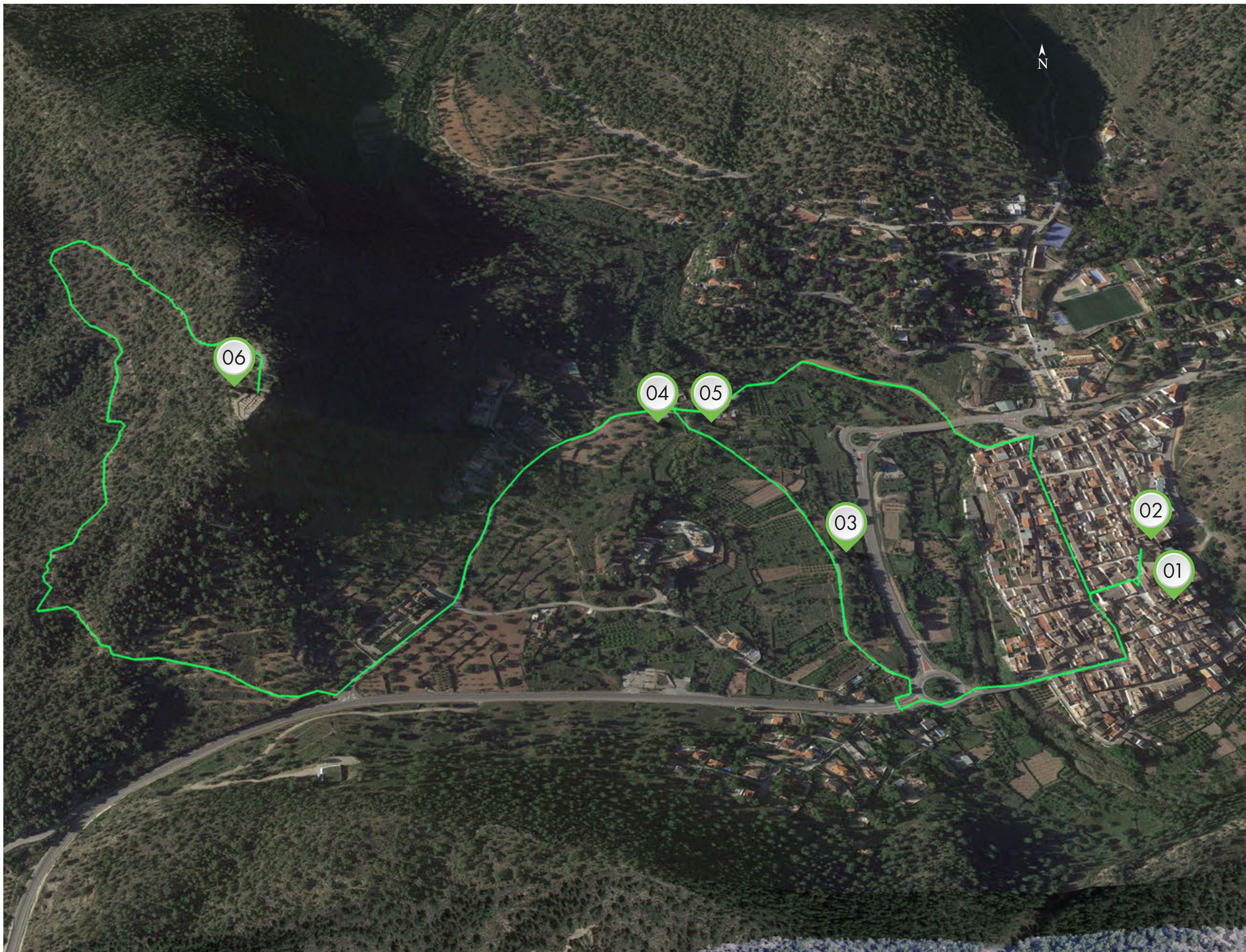
Ajuntament
de la Vila d'Olocau

*València
València
Turisme



Patronat Provincial de Turisme de València





**Ajuntament
de la Vila d'Olocau**

USEFUL INFORMATION

OLOCAU TOWN HALL

Tel: 96 270 30 11
www.olocau.es
villadeolocau@olocau.com

TOURIST INFORMATION OFFICE

WORKING HOURS:
Wednesday to Monday; 10 to 14 h.
Tel. 672 79 44 04 - puntal.llops@olocau.es

LOCAL POLICE AND EMERGENCY PHONE

Local police: 647 55 99 03
Emergency phone: 112

BARS AND RESTAURANTS

Bar Els Amics: 96 273 98 06
Bar Faustino: 96 273 96 86
Tasca Maber: 677 84 44 97
Rt. l'Arquet: 96 273 98 14
Rt. Pol. Pedralvila: 698 76 63 49
Bakery Ximo i Yoli: 664 61 12 48

ACCOMMODATION

Rural House "La Calderona-Olocau"
Tel. 96 270 30 11
casarural.calderona-olocau@olocau.es

Hostal l'Arquet
Tel. 96 273 98 14
www.arquetolocau.com



Mas del Capellà
Tel. 96 357 08 58
www.masdelcapella.com

Muntanyes d'Olocau
Tel. 626 42 21 88
www.albergueolocau.com

Casa Puerta de la Calderona
Tel. 609 17 79 96
facebook.com/casapuertadelacalderona



Rural House "La Casa del Forn"
Telf. 686 70 87 41
www.lacasadelforn.es

01   **TOWER
OF PARDINES**

03   **MAÇOLLADA
OF L'EDUA**

05   **MAÇOLLADA
OF LAMARA**

02   **CASA DE LA
SENYORIA**

04   **POND OF
L'AMARA**

06   **PUNTAL
DELS LLOPS**